

# MONTHLY MEMBERSHIP PROGRESS REPORT

District 11 D1

Results as of: 3/31/2026

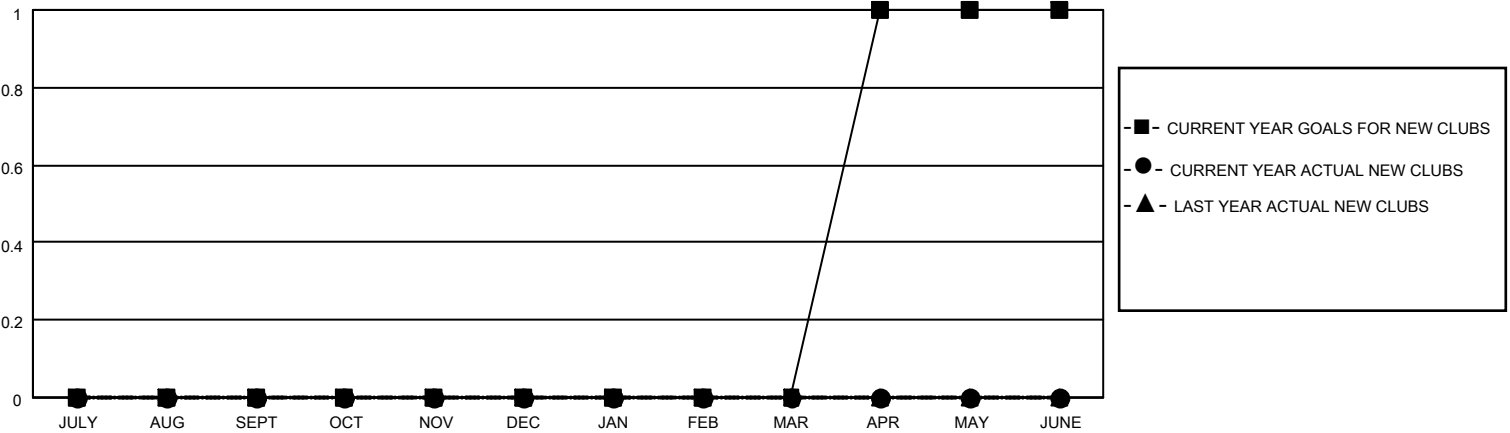
GMT:

LOCATION MICHIGAN

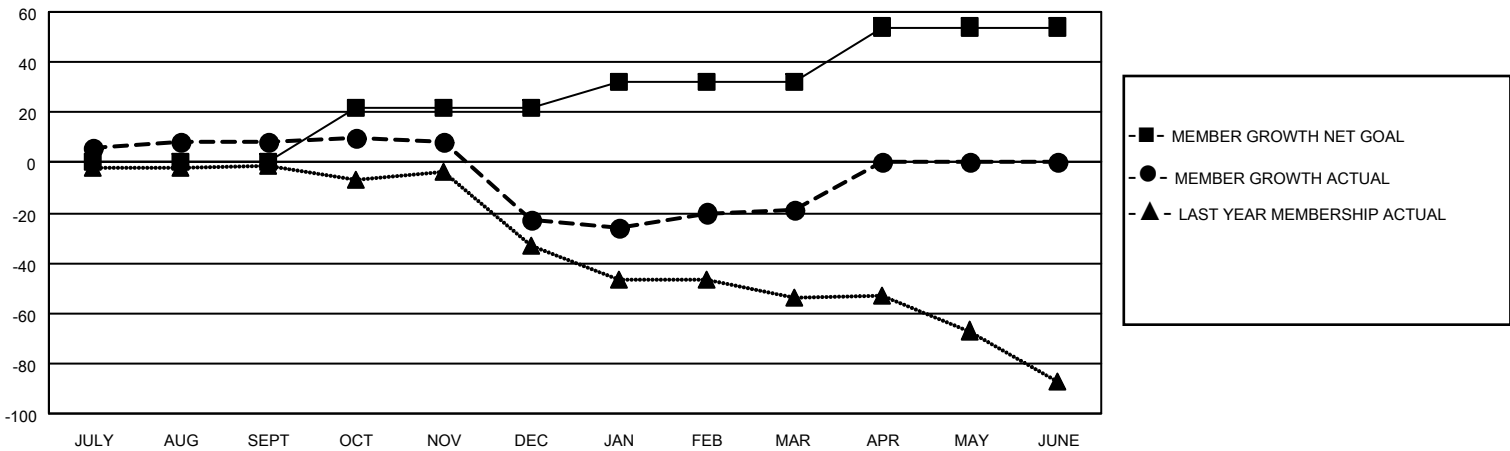
GMT CA

Clubs				Members			
RESULTS FOR 2025-2026				RESULTS FOR 2025-2026			
QUARTER	NEW CLUB GOAL	NEW CLUBS	DROPPED CLUBS	QUARTER	MEMBER GROWTH NET GOAL	MEMBER GROWTH ACTUAL	DROPPED MEMBERS ACTUAL (including transfers)
JULY/AUG/SEPT	0	0	1	JULY/AUG/SEPT	0	20	9
OCT/NOV/DEC	0	0	0	OCT/NOV/DEC	22	15	43
JAN/FEB/MAR	0	0	0	JAN/FEB/MAR	10	25	18
APR/MAY/JUNE	1	0	0	APR/MAY/JUNE	22	0	0

GOALS AND ACTUAL NEW CLUBS CUMULATIVE



GOALS AND ACTUAL MEMBERS CUMULATIVE



DROPPED CLUBS: 1	13 CLUBS OF 34 ADDED 1 OR MORE NEW MEMBERS	<b>GENDER DISTRIBUTION</b> MALE 566 (66.59%) FEMALE 284 (33.41%)
<b>DROPPED MEMBERS</b> DECEASED 15 CLUB CANCELLED 1 OTHER 54 TOTAL 70	<a href="#">CLICK HERE FOR CUMULATIVE MEMBERSHIP DATA</a>	TOTAL FAMILY UNIT MEMBERS 203 FAMILY MEMBERS PAYING HALF DUES 103